

TEST CONDITIONS

Test Date	5/20/2024
Test Conductor	Anton Francois +3
Boat Weight as Tested (lbs)	15000
Air Temperature (degrees F)	75
Elevation (ft)	0
Sea State	Choppy
Wind Velocity range (mph)	10
Fresh/Salt Water	Saltwater
Fuel Level at Testing (gal)	100

ENGINE SPECIFICATIONS

Number of Engines	2
Engine	V10 Verado
Horsepower	400
Cylinders	10
Drive or gear model and ratio	Standard 2.08
Mounting Bolt Hole	5,5
Engine Height (in)	1.0,1.0
Engine Setback (in)	1.0,1.0
Engine Length (in)	30,30

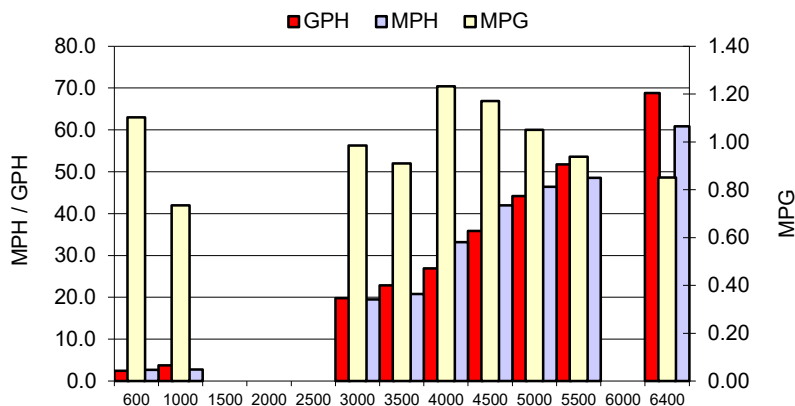
PERFORMANCE SUMMARY

Top Speed (mph @ rpm)	60.8	6281
Acceleration 0 - 20 mph (seconds)	7.13	
Acceleration 0 - 30 mph (seconds)	11.17	

PROPELLER SPECIFICATIONS

Mercury Name	Rev X
Material	Stainless Steel
Pitch	25.0,25.0
Number of Blades	4

PERFORMANCE CURVE



BOAT SPECIFICATIONS

Region/s sold	
Manufacturer	phenom
Website	
Boat Model	34
Boat Type	Offshore Saltwater
Material	0
Length (ft)	33.6
Beam (ft)	10.5
Max hp Capacity	0
Fuel Tank Capacity (gal)	350
Steering Type	Joystick
Dry Boat Weight (lbs)	9700

PERFORMANCE DATA

RPM	SPEED	FUEL CONSUMPTION	FUEL CONSUMPTION	RANGE
RANGE	MPH	GPH	MPG	MILES
600	2.7	2.4	1.10	386
1000	2.7	3.7	0.73	257
1500	0.0	0.0	0.00	0
2000	0.0	0.0	0.00	0
2500	0.0	0.0	0.00	0
3000	19.5	19.8	0.99	345
3500	20.8	22.9	0.91	318
4000	33.2	26.9	1.23	431
4500	42.0	35.9	1.17	410
5000	46.4	44.2	1.05	367
5500	48.6	51.8	0.94	328
6000	0.0	0.0	0.00	0
6400	60.8	68.8	0.85	298
0	0.0	0.0	0.0	0